

FINAL ANSWER KEY

Question 162/2023/OL

Paper Code:

Category 003/2023

Code:

Exam: Non Vocational Teacher Chemistry (By Transfer)

Date of Test 16-11-2023

Department Kerala Vocational Higher Secondary Education

Question1:-The intense colour of $K_3Fe[Fe(CN)_6]$ is due to

A:-MLCT

B:-LMCT

C:-Inter valence charge transfer

D:-Intra valence charge transfer

Correct Answer:- Option-C

Question2:-The intensity ratio of ESR lines of Diphenyl Picryl Hydrazyl radical in dissolved state is

A:-1:2:3:2:1

B:-1:2:2:3:1

C:-1:3:2:3:1

D:-1:2:2:3:1

Correct Answer:- Option-A

Question3:-Misch metal contains

A:-40% Ce and 44% La, 5% Fe

B:-50% Ce and 40% La, 7% Fe

C:-44% Ce and 50% La, 1% Fe

D:-50% La and 40% Ce, 5% Fe

Correct Answer:- Option-B

Question4:-The number of microstates for p² configuration

A:-45

B:-25

C:-15

D:-10

Correct Answer:- Option-C

Question5:-The values of L, S and J for the term symbol 3F_2

A:-L = 2, S = 1, J = 4,3,2

B:-L = 3, S = 0, J = 3,4,2

C:-L = 2, S = 1,0, J = 3,2,1

D:-L = 2, S = 0,1, J = 5,4,3

Correct Answer:-**Question Cancelled**

Question6:-How many hyperfine lines in ESR spectrum are shown by Mn^{2+} ?

A:-3

B:-5

C:-2

D:-6

Correct Answer:- Option-D

Question7:-STYX code for B_4H_{10} , B_5H_9 , B_6H_{10} & $B_{10}H_{14}$ are respectively as follows

A:-4012, 4020, 4220 and 4620

B:-4020, 4220, 2002 and 4002

C:-2004, 4212, 4654 and 2002

D:-4020, 4220, 4212 and 4620

Correct Answer:- Option-A

Question8:-Coloured haeme containing metalloproteins which can act as electron carriers during cellular respiration

A:-Siderophores

B:-Ferridoxin

C:-Myoglobin

D:-Cytochromes

Correct Answer:- Option-D

Question9:-Standard absorber which is used as a reference for the comparison of isomer shift for Mossbauer source nucleides of ^{57}Fe

A:-Sodium nitroprusside

B:-Iron cyanide

C:-Barium Stannate

D:-Trimethyl Silane

Correct Answer:- Option-A

Question10:-The number of metal-metal bonds in $Ir_4(CO)_{12}$

A:-Four

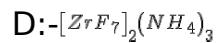
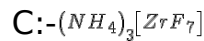
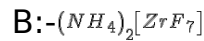
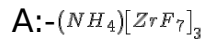
B:-Five

C:-Two

D:-Six

Correct Answer:- Option-D

Question11:-Write down the formula for ammonium hepta fluoro zirconate(IV).



Correct Answer:- Option-C

Question12:-The type of magnetism observed in complex $Cu_2(OOCCCH_3)_4 \cdot 2H_2O$

A:-Ferrimagnetism

B:-Ferromagnetism

C:-Intramolecular Antiferromagnetism

D:-Inter molecular Antiferromagnetism

Correct Answer:- Option-C

Question13:-In metal carbonyl complexes, as more electron density moves from the metal d orbitals to the CO orbitals the CO stretching frequency

A:-decreases

B:-disappears

C:-increases

D:-remains the same

Correct Answer:- Option-A

Question14:-Schrock carbenes are

A:-Singlets and Electrophilic

B:-Triplets and Nucleophilic

C:-Singlets and Nucleophilic

D:-Triplets and Electrophilic

Correct Answer:- Option-B

Question15:-Ugi's amine is

A:-Dimethyl amino methyl ferrocene

B:-N,N-dimethyl-1-ferrocenyl ethyl amine

C:-Dilithiated ferrocene

D:-Dimethyl amino ethyl-2-ferrocenyl ethyl amine

Correct Answer:- Option-B

Question16:-Which of the following statement is not true about Plastocyanin?

A:- Cu^+ is reduced to Cu

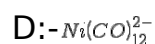
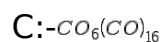
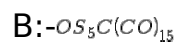
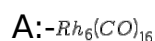
B:-Plastocyanin is a copper protein

C:-Rieske Centre helps in shuttling of electrons

D:-It mediates electron transfer

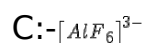
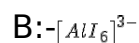
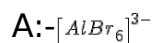
Correct Answer:- Option-A

Question17:-Which among the following is an example of Arachno Metal cluster?



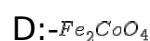
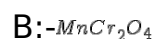
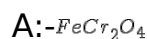
Correct Answer:- Option-D

Question18:-Which of the following complex among the following is most stable?



Correct Answer:- Option-C

Question19:-The oxide that has the inverse spinel structure



Correct Answer:- Option-D

Question20:-If in two minutes a radioactive substance is reduced by 75%, its decay constant is

A:- 0.0125 sec^{-1}

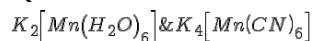
B:- 0.0225 sec^{-1}

C:- 0.01155 sec^{-1}

D:- 0.01543 sec^{-1}

Correct Answer:- Option-C

Question21:-Predict the μ_s value for



A:-1.414 & 2.103

B:-5.916 & 1.732

C:-2.836 & 1.414

D:-2.236 & 2.646

Correct Answer:- Option-B

Question22:-Which among the following statements regarding sodium-potassium pump are true?

- I. Transfer of Na^+ from intracellular fluids to extracellular fluids and interior of the cell acquires an excess negative charge
- II. Transfer of K^+ from intracellular fluids to extracellular fluids and exterior of the cell acquires an excess positive charge

- III. Transfer of K^+ from extracellular fluids to intracellular fluids and interior of the cell develops an excess negative charge
- IV. Transfer of Na^+ from extracellular fluids to intracellular fluids and interior of the cell acquires an excess negative charge

A:-I and II are correct

B:-I and III are correct

C:-I, II and III are correct

D:-I, II, III and IV are correct

Correct Answer:- Option-B

Question23:-Complex in which organic ligand is having only σ bond with metal:

A:- $W(CH_3)_6$

B:- $(\eta^5-C_5H_5)_2Fe$

C:- $(\eta^6-C_6H_6)_2Ru$

D:- $K[PtCl_3(C_2H_4)]$

Correct Answer:- Option-A

Question24:-The phenomenon of production of electric signals by the application of pressure is called

A:-Pyroelectricity

B:-Piezoelectricity

C:-Ferroelectricity

D:-Ferrielectricity

Correct Answer:- Option-B

Question25:-Hydrogen atoms in Chloriodomethane is

A:-homotopic

B:-enantiotopic

C:-diastereotopic

D:-heterotopic

Correct Answer:- Option-B

Question26:-Six membered ring in adamantane and norbornane is _____ and _____ respectively.

A:-Both are in chair form


B:-Twist boat and chair

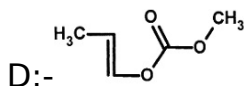
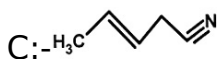
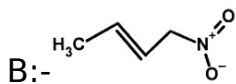
C:-Chair and twist boat

D:-Chair and Boat

Correct Answer:- Option-D

Question27:-Which among the following is a Michael Acceptor?

A:- 



Correct Answer:- Option-C

Question28:-Robbinson annulation reaction involves

A:-Aldol condensation followed by Michael addition

B:-Michael addition followed by Claisen condensation

C:-Michael addition followed by intramolecular aldol reaction

D:-Claisen condensation followed by Claisen rearrangement

Correct Answer:- Option-C

Question29:-Most basic among the following pyrrole, furan, pyridine and pyrimidine

A:-Pyrrole

B:-Piperidine

C:-Pyrimidine

D:-Pyridine

Correct Answer:- **Question Cancelled**

Question30:-The correct code of nucleophilicity in DMSO is

A:- $F^- > Cl^- > Br^- > I^-$

B:- $Cl^- > F^- > I^- \leq Br^-$

C:- $F^- < Cl^- < Br^- < I^-$

D:- $F^- > Cl^- \geq Br^- > I^-$

Correct Answer:- Option-A

Question31:-Which among the given compound is aromatic and has high dipole moment?

A:-Azulene

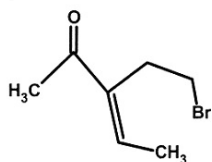
B:-Pyrene

C:-Tropone

D:-Pyridine

Correct Answer:- Option-C

Question32:-Name the compound



A:-(Z)-3-(bromomethyl)pent-3-en-2-one

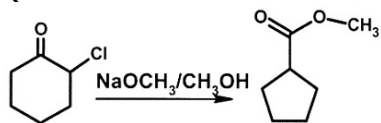
B:-(E)-3-(bromomethyl)pent-2-en-4-one

C:-(Z)-3-(bromomethyl)pent-3-en-4-one

D:-(Z)-3-(bromomethyl)pent-3-en-2-one

Correct Answer:-**Question Cancelled**

Question33:-The following conversion involves



A:-Lossen rearrangement

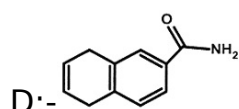
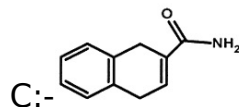
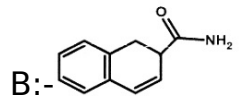
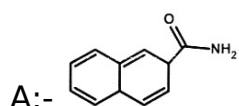
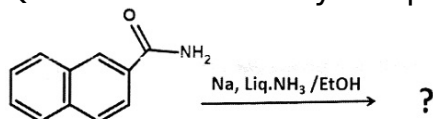
B:-Favorski rearrangement

C:-Curtius rearrangement

D:-Demjanov rearrangement

Correct Answer:- Option-B

Question34:-Identify the product of the reaction:



Correct Answer:- Option-A

Question35:-Which of the following statement(s) is/are true about Fetizen's reagent?

- (i) Fetizen's reagent is silver carbonate precipitated on Kaolinite
- (ii) Fetizen's reagent oxidizes selectively 2°-alcohols over 1°-alcohols
- (iii) It is a mild reagent
- (iv) It is used in polar solvents only

A:-Statement (i), (ii) and (iii) only

B:-Statement (ii) and (iii) only

C:-Statement (iii) and (iv) only

D:-Statement (ii) and (iv) only

Correct Answer:- Option-B

Question36:-Suitable synthetic equivalent for aryl cation (Ar⁺) is

A:- $ArNO_2$

B:-ArCN

C:- ArN_2X

D:-ArX

Correct Answer:- Option-C

Question37:-Example for and N-terminal protecting group used in peptide synthesis

A:-Fluorenylmethoxycarbonyl

B:-Trifluoro acetate

C:-1, 3 dithiane

D:-DCC

Correct Answer:- Option-A

Question38:-Which of the following substituent exhibits a negative sigma (σ) value at the para position?

A:-Cl

B:- NMe_3^+

C:- NO_2

D:-OH

Correct Answer:- Option-D

Question39:-Which neurotransmitter is deficient in the brains of individuals with Parkinson's disease?

A:-Serotonin

B:-Acetylcholine

C:-Dopamine

D:-Endorphins

Correct Answer:- Option-C

Question40:-Syn hydroxylation of alkenes can be affected by

A:- O_3O_4

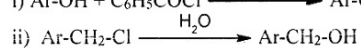
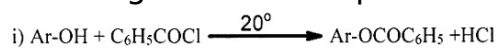
B:- H_2O_2

C:- $B_2H_6 / NaOH$

D:- SeO_2

Correct Answer:- Option-A

Question41:-Identify the correct statement regarding the Hammett's ' ρ ' values for following reactions of para substituted aryl compounds (Ar) (i) and (ii)



A:-' ρ ' value is positive for both reactions

B:-' ρ ' value is negative for both reactions

C: - ρ value is positive for reaction i and negative for reaction ii

D: - ρ value is negative for reaction i and positive for reaction ii

Correct Answer:- Option-C

Question42:-Vitamin A is an example for

A:-Monoterpene

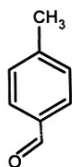
B:-Diterpene

C:-Sesquiterpene

D:-Hemiterpene

Correct Answer:- Option-B

Question43:-How many signals for following compound observed in proton decoupled ^{13}C NMR spectroscopy?



A:-5

B:-4

C:-8

D:-6

Correct Answer:- Option-D

Question44:-Internal reference compound used in ESR is

A:-1,1-diphenyl-2'-picrylhydrazyl

B:-2,4,6-trimethoxycarbonyl nitrosobenzene

C:-Tetramethyl silane

D:-1, 3-Diphenyl hydrazyl

Correct Answer:- Option-A

Question45:-Photochemical electrocyclic reactions 1, 3, 5, 7-Octatetraene are

A:-Disrotatory

B:-Conrotatory

C:-Antrafacial

D:-Suprafacial

Correct Answer:- Option-A

Question46:-In the Edman method, which reagent is used to selectively cleave the N-terminal amino acid from a protein?

A:-Trypsin

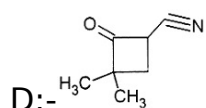
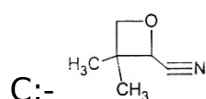
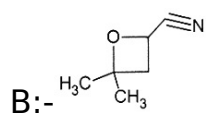
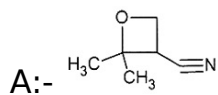
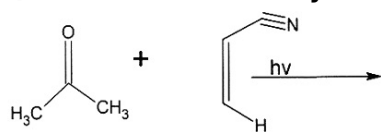
B:-Trifluoroacetic acid

C:-Cyanogen bromide

D:-Phenyl isothiocyanate

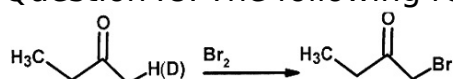
Correct Answer:- Option-D

Question47:-Identify the product of the given reaction:



Correct Answer:- Option-B

Question48:-The following reaction shows



A:-no kinetic isotope effects

B:-secondary kinetic isotope effect

C:-inverse secondary kinetic isotope effect

D:-primary kinetic isotope effect

Correct Answer:- Option-D

Question49:-In a cubic closed packed structure of an atom with a radius of 1.414 \AA , edge length of the unit cell will be

A:- 2 \AA

B:- 4 \AA

C:- 8 \AA

D:- 0.5 \AA

Correct Answer:- Option-B

Question50:-Number of components in a solution containing $\text{Na}^+, \text{Cl}^-, \text{Ag}^+, \text{NO}_3^-, \text{AgCl}(s)$ and H_2O is

A:-4

B:-3

C:-5

D:-6

Correct Answer:- Option-A

Question51:-The molecular dipole moment of chlorobenzene is 1.69 Debye. Dipole moment of ortho dichlorobenzene in Debye will be

A:-1.69

B:-3.28

C:-2.08

D:-2.93

Correct Answer:- Option-D

Question52:-One mole of an ideal gas expands reversibly from a volume of 5 dm^3 to 50 dm^3 . The entropy change will be

A:-Zero

B:-25.75 J/K

C:-90.87 J/K

D:-None of the above

Correct Answer:- Option-D

Question53:-Which condition is favourable for liquefaction of gases?

A:-Compression

B:-Cooling

C:-Both

D:-None

Correct Answer:- Option-C

Question54:-Auger Electron Spectroscopy gives information about

A:-Valence electrons of the adsorbed species

B:-Core electrons of the adsorbed species

C:-Image of the surface

D:-Elemental analysis of the surface

Correct Answer:- Option-B

Question55:-In Tafel plot, logarithm of current density is plotted against

A:-Free energy

B:-Applied Potential

C:-Over voltage

D:-Diffusion current

Correct Answer:- Option-C

Question56:-Mathematical form of Hammett equation is

A:- $\log K_a - \log K_{a,0} = \sigma \rho$

B:- $\log K_a + \log K_{a,0} = \sigma \rho$

C: $-\log K_{a,0} - \log K_a = \sigma\rho$

D: -None of the above

Correct Answer: - Option-A

Question57: -Which is not correct about the extent of adsorption from solution phase?

A: -increases with increase in surface area of adsorbent

B: -depends on concentration of solute in solution

C: -decreases with increase in temperature

D: -increases with increase in temperature

Correct Answer: - Option-D

Question58: -When a catalyst is added to a reaction system,

A: -equilibrium position of the reaction is shifted

B: $-\Delta H$ of the reaction is changed

C: -reaction rate is changed

D: -all the above

Correct Answer: - Option-C

Question59: -The term symbol for the ground state of Ni is

A: $-^4F_3$

B: $-^3F_4$

C: $-^2D_{3/2}$

D: $-^3D_{5/2}$

Correct Answer: - Option-B

Question60: -The correct order of bond order is

A: $-O_2^{2-} < O_2 < O_2^- < O_2^+$

B: $-O_2^- < O_2 < O_2^+ < O_2^{2-}$

C: $-O_2 < O_2^- < O_2^+ < O_2^{2-}$

D: $-O_2^{2-} < O_2^- < O_2 < O_2^+$

Correct Answer: - Option-D

Question61: -Trans-1,2-dichloroethene belongs to which point group?

A: $-C_{2v}$

B: $-D_{2h}$

C: $-C_{2h}$

D: $-D_{4h}$

Correct Answer: - Option-C

Question62: -The IR active fundamental vibrational mode of CH_4 molecule is

A: $-T_1$

B:- T_2

C:- A_1

D:- A_2

Correct Answer:- Option-B

Question63:-Select the compound which will not give one signal in proton-NMR spectrum:

A:- CH_3COOCH_3

B:- CH_3OCH_3

C:- $H_2C=C=CH_2$

D:-All the above

Correct Answer:- Option-A

Question64:-If you conducting a two-sample t-test for independent samples, which assumption is NOT required?

A:-Normality of data within each sample

B:-Equal sample sizes

C:-Homogeneity of variances

D:-Independence of observations

Correct Answer:- Option-B

Question65:-Mention the type of chromatography often used for the purification of proteins and nucleic acids.

A:-Gas Chromatography

B:-Size-exclusion chromatography

C:-Reversed-phase chromatography

D:-Thin-layer chromatography

Correct Answer:- Option-C

Question66:-Supercritical CO_2 extraction is particularly well-suited for extracting compounds with which of the following properties

A:-Low volatility

B:-High solubility in water

C:-Polar nature

D:-Non-polar nature

Correct Answer:- Option-D

Question67:-What does a base-line correction in a DTA to help to eliminate?

A:-Heat capacity effects

B:-Instrumental noise

C:-Chemical reactions

D:-Phase transitions

Correct Answer:- Option-B

Question68:-In microwave synthesis, what does the microwave radiation in heating the reaction mixture?

A:-It directly heats the reaction vessel

B:-It heats the reaction mixture via convection

C:-It generates heat through chemical reactions

D:-It excites the molecules, leading to rapid internal heating

Correct Answer:- Option-D

Question69:-Which technique is mainly used for the production of single walled carbon nanotubes (SWCNTs) with controlled chirality and high purity?

A:-Arc discharge

B:-Chemical Vapor Deposition (CVD)

C:-Ball milling

D:-Electrochemical exfoliation

Correct Answer:- Option-B

Question70:-In which crystal symmetry class are piezoelectric materials most commonly found?

A:-Isometric (cubic)

B:-Tetragonal

C:-Orthorhombic

D:-Trigonal (rhombohedral)

Correct Answer:- Option-D

Question71:-The mode of questioning that involves going deep into student responses through step by step questioning with a view to elicit the required responses is termed as

A:-Recapitulatory Questioning

B:-Probing Questioning

C:-Refocusing Questioning

D:-Redirected Questioning

Correct Answer:- Option-B

Question72:-Herbartian steps in lesson planning include:

- (i) Preparation and Presentation
- (ii) Discussion and Investigation
- (iii) Generalisation and Application
- (iv) Comparison and Expression

A:-Only (i) and (ii)

B:-Only (ii) and (iii)

C:-Only (i) and (iii)

D:-Only (iii) and (iv)

Correct Answer:- Option-C

Question73:-The categories of total verbal behaviour according to Flanders are

A:-Teacher talk, Pupil talk, Silence

B:-Teacher talk and Pupil talk

C:-Teacher talk, Pupil talk and Indirect talk

D:-Teacher talk, Pupil talk and Direct talk

Correct Answer:- Option-A

Question74:-Amit's score in a reading test is 70. This statement is an example of

A:-Criterion referenced evaluation

B:-Norm referenced evaluation

C:-Summative evaluation

D:-Convergent evaluation

Correct Answer:-**Question Cancelled**

Question75:-The stages/phases of teaching as suggested by Jackson are,

(i) Pre-active or Planning

(ii) Interactive and Implementation

(iii) Interactive and Evaluation

(iv) Preparation, Presentation and Assessment

A:-Only (i and ii)

B:-Only (iii)

C:-Only (i and iii)

D:-Only (iv)

Correct Answer:- Option-C

Question76:-The given graphical form represents

Control variable

	Experimental Variable			
	Treatment A	Treatment B	Treatment C	Treatment D
Level 1	Cell 1	Cell 4	Cell 7	Cell 11
Level 2	Cell 2	Cell 5	Cell 8	Cell 12
Level 3	Cell 3	Cell 6	Cell 9	Cell 13

A:-4×3 Complex factorial design

B:-3×4 Simple factorial design

C:-3×4 Complex factorial design

D:-4×3 Simple factorial design

Correct Answer:- Option-D

Question77:-The experiment of Skinner on cats gave the principle of conditioning and reinforcement. This is an example of

A:-Correlational Research

B:-Fundamental Research

C:-Applied Research

D:-Casual-comparative research

Correct Answer:-**Question Cancelled**

Question78:-Likert Scale is a

A:-Cumulative Scale

B:-Differential Scale

C:-Factor Scale

D:-Summated Scale

Correct Answer:- Option-D

Question79:-Which of the following aptly describes 'symposium'?

A:-A formal meeting which aims at discussion, problem solving and consultation

B:-A formal meeting in which a number of experts in a particular field discuss a particular subject

C:-Have specific objective and lasts for several days

D:-Small or large group discussion, and practical application of concepts

Correct Answer:- Option-B

Question80:-Which of the following is not a projective test?

A:-Torrance Test

B:-Word Association Test

C:-Picture Completion Test

D:-Rosenzweig Test

Correct Answer:- Option-A

Question81:-Consider the following statements about Preamble:

(i) It mentions the objective of the Constitution

(ii) In the Berubari Union Case (1960), the Supreme Court opined that the Preamble was not part of the Constitution

(iii) The term 'integrity' was added through 44th amendment of the Constitution

Which of the statement/s is given above is/are correct?

A:-Only (i)

B:-Only (i) and (ii)

C:-Only (ii) and (iii)

D:-All the above (i, ii and iii)

Correct Answer:- Option-B

Question82:-Article 34 of the Indian Constitution is related to which of the following?

A:-Legislation to give effect to the provisions of this Part III

B:-Power of Parliament to modify the rights conferred in Part III

C:-Restriction on rights conferred by this Part while martial law is in force in any area

D:-Remedies for enforcement of Fundamental Rights

Correct Answer:- Option-C

Question83:-Consider the following statements regarding the election of The President of India:

- (i) The President shall be elected by the members of an electoral college
 - (ii) The Electoral college consists of all members of both Houses of Parliament and state legislative Assemblies.
 - (iii) The election of the President shall be held in accordance with the system of proportional representation by means of the single transferable vote
- Which of the statement/s given above is/are correct?

A:-Only (i) and (ii)

B:-Only (ii) and (iii)

C:-Only (i) and (iii)

D:-All the above (i), (ii) and (iii)

Correct Answer:- Option-C

Question84:-Consider the statements about the Power of President to Promulgate Ordinances:

- (i) He can only promulgate the ordinance when both the houses or either of the houses is not in session
- (ii) The Parliament has to approve the ordinance within six weeks of its reassembly
- (iii) Once introduced, the President cannot withdraw the Ordinance until the parliament passed it.

Which of the statement/s given above is/are correct?

A:-Only (i) and (ii)

B:-Only (ii) and (iii)

C:-Only (i) and (iii)

D:-All the above (i), (ii) and (iii)

Correct Answer:- Option-A

Question85:-Which among the following is NOT a function of Inter-State Council?

A:-Inquiring into and advising upon disputes which may have arisen between States

B:-Levy and collection of goods and services tax incourse of inter-State trade or commerce

C:-Investigating and discussing subjects in which some or all of the States, or the Union and one or more of the States, have a common interest

D:-Making recommendations upon any such subject and, in particular, recommendations for the better co-ordination of policy and action with respect to that subject

Correct Answer:- Option-B

Question86:-Consider the following statements about the Protection of Women from Domestic Violence Act, 2005:

- (i) It extends to the whole of India
 - (ii) It extends to the whole of India except the State of Jammu and Kashmir
 - (iii) The Domestic Violence Act 2005, come into force on 26th October, 2006
- Which of the statement/s given above is/are correct?

A:-Only (i) and (ii)

B:-Only (i) and (iii)

C:-Only (ii) and (iii)

D:-All the above (i), (ii) and (iii)

Correct Answer:- Option-B

Question87:-Which among the following is/are powers of Central Government under The Environment Protection Act, 1986?

- (i) Co-ordination of actions by the State Governments, Officers and other authorities
- (ii) Laying down procedures and safeguards for the prevention of accidents which may cause environmental pollution
- (iii) Laying down procedures and safeguards for the handling of hazardous substances
- (iv) Power to constitute an advisory committee

A:-Only (i), (ii) and (iii)

B:-Only (i), (iii) and (iv)

C:-Only (i), (ii) and (iv)

D:-All the above

Correct Answer:- Option-A

Question88:-Consider the following statements about the State Information Commission:

- (i) shall consist of the State Chief Information Commissioner, and such number of State Information Commissioners, not exceeding ten, as may be deemed necessary
- (ii) The State Chief Information Commissioner and the State Information Commissioners shall be appointed by a committee, in which the Governor, shall be the Chairperson of the committee
- (iii) The State Chief Information Commissioner shall hold office for a term of five years from the date on which he enters upon his office and shall not be eligible for reappointment

Which of the statement/s given above is/are correct?

A:-Only (i) and (ii)

B:-Only (ii) and (iii)

C:-Only (i) and (iii)

D:-All the above (i), (ii) and (iii)

Correct Answer:- Option-C

Question89:-Which among the following is/are considered as sexual offences against children under POCSO Act 2012?

- (i) Penetrative sexual assault
- (ii) Aggravated penetrative sexual assault
- (iii) Aggravated sexual assault

(iv) Sexual harassment

A:-Only (i), (ii) and (iii)

B:-Only (i), (iii) and (iv)

C:-Only (i), (ii) and (iv)

D:-All the above

Correct Answer:- Option-D

Question90:-Which among the following is/are Employment Generation Schemes/Programmes of Government of India?

(i) Mahatma Gandhi National Rural Employment Guarantee Act (MGNREGA)

(ii) Atmanirbhar Bharat Rojgar Yojana (ABRY)

(iii) PM Poshan Shakti Nirman Abhiyaan

(iv) Pradhan Mantri MUDRA Yojana (PMMY)

A:-Only (i), (ii) and (iii)

B:-Only (i), (iii) and (iv)

C:-Only (i), (ii) and (iv)

D:-All the above

Correct Answer:- Option-C

Question91:-Which of the following statements about JATHI NASHINI SABHA are correct?

(a) It was founded by Swami Anantha Theerthan

(b) Started in 1933, it was a movement among the progressive Nairs of Kerala

(c) It stood for Temple Entry and Inter dining

(d) It popularised inter caste marriages among Nairs

A:-(a) and (b) are correct

B:-(a) and (c) are correct

C:-(a) and (d) are correct

D:-all are correct

Correct Answer:- Option-B

Question92:-Which of the following statements about VIVEKODAYAM are correct?

(a) It is a literary journal established in 1904

(b) It was founded by Dr. Palpu

(c) It spread the message of socio-religious reforms

(d) The govt of Travancore banned the journal in 1910

A:-(c) and (d) are correct

B:-(b) and (d) are correct

C:-(a) and (c) are correct

D:-all are incorrect

Correct Answer:- Option-C

Question93:-"PRACHEENA MALAYALAM" is a book that deals with

(i) evolution of Malayalam as an independent language

(ii) it provided insights into misrepresentations of Kerala History

- (iii) it deals with various aspects of Kerala Culture
- (iv) it is composed by Ulloor S Parameswari Aiyer

A:-(a) and (b) are correct

B:-(c) and (d) are correct

C:-(a) and (d) are correct

D:-(b) and (c) are correct

Correct Answer:- Option-D

Question94:-Which of the following statements about Kerala Mahila Desa Service Sangham are correct?

- (a) it is the Women Wing of Kerala Pradesh Congress Committee
- (b) it is founded by Arya Pallom
- (c) it helped in bringing women of Kerala to the mainstream of Indian National Movement
- (d) Kerala Renaissance leader Lalitha Prabhoo is associated with it

A:-(a) and (d) are correct

B:-(b) and (c) are correct

C:-(a) and (d) are correct

D:-(c) and (d) are correct

Correct Answer:- Option-D

Question95:-Which of the following about Malabar Marriage Act of 1896 are correct?

- (a) it was a major step forward for Women's rights in Kerala
- (b) it was drafted on the basis of the recommendations of Malabar Marriage Commission
- (c) Yogakshama Sabha played an important role in bringing in this Act
- (d) it brought changes in the family structure of Nambuthiris

A:-(a) and (c) are correct

B:-(a) and (d) are correct

C:-(a) and (b) are correct

D:-(b) and (d) are correct

Correct Answer:- Option-C

Question96:-Which of the following statements about "Coonan Cross Oath" are correct?

- (a) it is an oath taken by the Syrian Christians of Kerala
- (b) after the Oath, the Syrian Christians agreed for a compromise with the Jesuits
- (c) after the Oath, Latin Liturgy came to be recited on selected days in Syrian Churches
- (d) the oath took place in 1653

A:-(b) and (c) are correct

B:-(a) and (d) are correct

C:-(c) and (d) are correct

D:-all are correct

Correct Answer:- Option-B

Question97:-Which of the following statements about NEDUMKOTTA or Travancore Lines are correct?

- (a) it was built by Dharma Raja
- (b) it was built with the help of British Expertise
- (c) it aimed at preventing the Southward expansion of Zamorins
- (d) it is helpful in preventing Mysorean invasion of Travancore

A:-(a) and (d) are correct

B:-(c) and (d) are correct

C:-(b) and (d) are correct

D:-(a) and (c) are correct

Correct Answer:- Option-A

Question98:-Which of the following statements about KANFED (Kerala agency for non-formal education) are correct?

- (a) PN Panicker was the founder of this movement
- (b) it specialised in literary and adult education programmes
- (c) its head quarters is in Thrissur
- (d) the agency has been taken over by Central HRD ministry

A:-(a) and (d) are correct

B:-(c) and (d) are correct

C:-(a) and (b) are correct

D:-(b) and (d) are correct

Correct Answer:- Option-C

Question99:-Which of the following statements about SHARABATHI SANORA are correct?

- (a) it is the name of a wheat variety
- (b) it is cultivated purely through organic farming
- (c) it was Dr. M.S. Swaminathan, who developed this wheat variety
- (d) it is the product of a research done in collaboration with Israel

A:-(a) and (d) are correct

B:-(c) and (a) are correct

C:-(b) and (d) are correct

D:-all are correct

Correct Answer:- Option-B

Question100:-Which of the following statements about MORAZHA agitation are correct?

- (a) it is an anti-british agitation led by Kerala Pradesh Congress Committee
- (b) KPR Goplan was one its leaders
- (c) agitation led to the imposition of anti-press laws in Malabar
- (d) it prepared the ground for socialist movements in Malabar

A:-(a) and (d) are correct

B:-(b) and (d) are correct

C:-(d) and (c) are correct

D:-(a) and (b) are correct

Correct Answer:- Option-D