

## FINAL ANSWER KEY

Question 52/2025/OL

Paper Code:

Category 606/2024

Code:

Exam: Reader Grade II

Date of Test 18-06-2025

Department Printing

Question1:-The apparent increase in the colourfulness and contrast of scenes with increase in illumination level is described by

A:-Abney effect

B:-The Hunt effect and Stevens effect

C:-Weber's Law

D:-None of these

Correct Answer:- Option-B

Question2:-The ratio of Chroma and Lightness is

A:-Brightness

B:-Colourfulness

C:-Saturation

D:-None of these

Correct Answer:- Option-C

Question3:-The change of appearance of oncoming headlights can be largely explained by the processes of light adaptation described by

A:-Abney effect

B:-The Hunt effect and Stevens effect

C:-Weber's Law

D:-None of these

Correct Answer:- Option-C

Question4:-Which of these shows the relationship between Primary, Secondary and Tertiary colours?

A:-Color wheel

B:-Color chords

C:-Color Triangle

D:-NCS Color Solid

Correct Answer:- Option-A

Question5:-'Polyautography' later became known as

A:-Letterpress

B:-Flexography

C:-Lithography

D:-None of these

Correct Answer:- Option-C

Question6:-Vision served by Cone cells in Retina is referred as

A:-Photopic vision

B:-Mesopic vision

C:-Rhodospin

D:-Scotopic vision

Correct Answer:- Option-A

Question7:-A tri stimulus color measuring instrument is more suitable for measuring

A:-Color differences

B:-Absolute color measurement

C:-Optical density

D:-All of these

Correct Answer:- Option-A

Question8:-In a spectrophotometer, the intensity spectrum of the color is processed by means of

A:-Optical filters

B:-Digital filtration

C:-CIE standard values

D:-All of these

Correct Answer:- Option-B

Question9:-How does a reconditioning wash up differ from a regular wash up?

A:-A reconditioning wash up uses a single-step solvent, whereas a regular wash up uses a multi-step solvent

B:-A reconditioning wash up follows the same procedure as a regular wash up but uses a multi-step solvent instead of a single-step solvent

C:-A reconditioning wash up is a simpler process compared to a regular wash up, requiring fewer solvents

D:-A reconditioning wash up involves no solvent, while a regular wash up uses multi-step solvents

Correct Answer:- Option-B

Question10:-By using a multi-step reconditioning wash up, roller maintenance can be reduced by approximately how much?

A:-By a factor of 1 or 2

B:-By a factor of 3 or 4

C:-By a factor of 5 or 6

D:-By a factor of 7 or 8

Correct Answer:- Option-B

Question11:-What is the relationship between dryer temperature and press speed?

A:-Dryer temperature is inversely related to press speed

B:-Dryer temperature is not related to press speed

C:-Dryer temperature is directly related to press speed

D:-Drying temperature is equal to the square of the press speed

Correct Answer:- Option-C

Question12:-What happens to the dryer temperature requirement when there is heavy ink coverage?

A:-It requires less drying energy

B:-It remains the same

C:-It requires no drying energy

D:-It requires more drying energy

Correct Answer:- Option-D

Question13:-Which of the following is NOT a function of a plate scanner?

A:-Interfacing with an inking control console

B:-Measuring image area percentage

C:-Recording plate readings

D:-Controlling dryer tempterture

Correct Answer:- Option-D

Question14:-In a UGRA Plate control designed to assess sensitivity, what typs of lines are included and what is the range of their measurement?

A:-Only positive micro lines ranging from 4 to 70 micro meters

B:-Only negative micro lines ranging from 4 to 70 micro meters

C:-Both positive and negative micro lines ranging from 4 to 70 micro meters

D:-Positive and negative micro lines with no specific range given

Correct Answer:- Option-C

Question15:-Which of the following factor contribute most to the collective strength of magazines?

A:-Specialization

B:-Technology

C:-Innovation

D:-All of the above

Correct Answer:- Option-D

Question16:-Which association adopted a code of standards of advertising practice to promote healthy competition and a high standard of advertising?

A:-IFWJ

B:-PII

C:-IJU

D:-AAAI

Correct Answer:- Option-D

Question17:-In a make-ready book, the ratio of clean sheets to waste sheets is 1:5. If there are a total of 60 sheets in the book, how many of these are clean sheets?

A:-10

B:-12

C:-15

D:-20

Correct Answer:- Option-A

Question18:-What is the primary function of a scanning densitometer in the context of quality control?

A:-To scan and analyse digital images for resolution

B:-To measure and analyse printed color bars for color accuracy and density

C:-To convert printed documents into digital formats

D:-To adjust the contrast and brightness of scanned images

Correct Answer:- Option-B

Question19:-What does the term "Print Production Format (PPF)" refer to in the context of printing and publishing?

A:-A digital file format used for creating 3D models

B:-A standardized format for exchanging data between different print production systems

C:-A software used for graphic design and illustration

D:-None of these

Correct Answer:- Option-B

Question20:-What is the primary purpose of CIP4 in the printing industry?

A:-To develop standards for 3D printing technologies

B:-To provide training programs for graphic designers

C:-To promote the automation of print production processes through standardized data exchange

D:-To create new types of printing inks

Correct Answer:- Option-C

Question21:-Which of the following software requires a license for legal operation?

A:-WINDOWS

B:-LINUX

C:-Both 1 and 2

D:-None of them

Correct Answer:- Option-C

Question22:-One inch is equal to how many points?

A:-12

B:-24

C:-36

D:-72

Correct Answer:- Option-D

Question23:-What is the full form of GIMP?

A:-GNU Image Maintain Program

B:-GNU Image Manipulation Program

C:-GNU Image Monitoring Program

D:-GNU Image Making Program

Correct Answer:- Option-B

Question24:-In India, the copyright for an original work vests with the author for a period of how many years?

A:-Authors lifespan + 40 years

B:-Authors lifespan + 50 years

C:-Authors lifespan + 60 years

D:-Authors lifespan + 70 years

Correct Answer:- Option-C

Question25:-The distance pages need to move from the spine to accommodate paper thickness and folding is known as

A:-CREEP

B:-GUTTER

C:-MARGINS

D:-FOLIO

Correct Answer:- Option-A

Question26:-Pick out the line which will not be detected by graphic arts camera film?

A:-CENTRE LINE

B:-FOLD LINE

C:-TRIM LINE

D:-IMAGE GUIDE LINE

Correct Answer:- Option-D

Question27:-The feature of page layout software that allows you to place text into

more than one page or column simultaneously is called

A:-TEXT WRAP

B:-AUTO FLOW

C:-STYLE SHEET

D:-RULER GUIDE

Correct Answer:- Option-B

Question28:-Which of the following is the primary purpose of imposition in prepress?

A:-To adjust image colors

B:-To arrange pages in the correct order for printing and binding

C:-To select the paper type

D:-To create a PDF file

Correct Answer:- Option-B

Question29:-Which imposition types uses one plate to print both sides of a sheet, requiring the sheet to be turned side-to-side?

A:-Sheetwise

B:-Work-and-Turn

C:-Work-and-Tumble

D:-Ganged

Correct Answer:- Option-B

Question30:-What is the function of "RIP" in prepress workflow?

A:-It is a software that is used to design pages

B:-It is a process of combining multiple images

C:-It translates digital files into a format that the output device can use

D:-It is a method of plate correction

Correct Answer:- Option-C

Question31:-Which of the following is NOT a component of a CTP system?

A:-Computer

B:-Imaging system

C:-Printing plate

D:-Darkroom

Correct Answer:- Option-D

Question32:-Which of the following plate problems is most likely caused by "insufficient gumming or desensitizing?"

A:-Dot loss

B:-Dot gain

C:-Blinding

D:-Scumming

Correct Answer:- Option-D

Question33:-Which of the following is NOT a factor to be considered when planning a job before imposition?

A:-Number of colors

B:-Type of paper

C:-Finishing works

D:-Font size of the text

Correct Answer:- Option-D

Question34:-What is the function of a "light time integrator" in plate exposing?

A:-To measure the plate thickness

B:-To control the amount of light reaching the plate

C:-To adjust the focus of the exposure unit

D:-To cool the plate after exposure

Correct Answer:- Option-B

Question35:-Which of these page layout elements helps define where a line of text begins and ends?

A:-Gutter

B:-Spine

C:-Margin

D:-Folio

Correct Answer:- Option-C

Question36:-What is the key difference between PostScript Type 1 fonts and TrueType fonts?

A:-Type 1 fonts are bitmap-based, while True Type fonts are vector-based

B:-Type 1 fonts were developed by Microsoft, while TrueType fonts were developed by Adobe

C:-PostScript Type 1 fonts are generally preferred in prepress for their quality and device independence

D:-TrueType fonts cant's be scaled or rotated

Correct Answer:-**Question Cancelled**

Question37:-Which of the following is a common image format?

A:-TXT

B:-RTF

C:-JPEG

D:-DOC

Correct Answer:- Option-C

Question38:-Which type of original consists of solid lines and text?

A:-Tone art

B:-Line art

C:-Raster images

D:-Vector images

Correct Answer:- Option-B

Question39:-What is a limitation of a .txt file?

A:-It cannot be read by all word processors

B:-It does not support text formatting

C:-It is prone to viruses

D:-It cannot save documents

Correct Answer:- Option-B

Question40:-What is a ligature?

A:-A style of typeface

B:-The space between lines of text

C:-Two or more connected letters on the same type body

D:-The process of aligning text

Correct Answer:- Option-C

Question41:-Alois snefelder made his experiments on printing by preparing planographic image on \_\_\_\_\_. Hence it is called lithographic printing.

A:-Paper

B:-Wood

C:-Stone

D:-Cloth

Correct Answer:- Option-C

Question42:-Additional form-rollers are employed to minimize

A:-Ghosting

B:-Hickies

C:-Moire

D:-All of the above

Correct Answer:- Option-A

Question43:-Planographic Printing process is a \_\_\_\_\_ process.

A:-Mechanical

B:-Chemical

C:-Kinetic

D:-Both 2 and 3



Correct Answer:- Option-B

Question44:-A major advantage for common impression is that the sheet is held by \_\_\_\_\_ of grippers during passage through all printing units.

A:-One set

B:-Two set

C:-Three set

D:-None of the above

Correct Answer:- Option-A

Question45:-The time taken by the doctor roller to contact and receive dampening solution from the fountain pan roller to supply the dampening solution to the oscillator is called

A:-Drying period

B:-Oscillating period

C:-Dwell period

D:-All of the above

Correct Answer:- Option-C

Question46:-The raising and lowering of the front lays determines the amount of \_\_\_\_\_ of the sheet.

A:-Pull lay

B:-Side lay

C:-Front lay

D:-Gripper margin

Correct Answer:- Option-D

Question47:-Egyptians began making writing material called

A:-Cotton

B:-Wool

C:-Papyrus

D:-None of the above

Correct Answer:- Option-C

Question48:-\_\_\_\_\_ supplied either wove or laid is normally cream colored.

A:-Air papers

B:-Banknote paper

C:-Bond paper

D:-Antique paper

Correct Answer:- Option-D

Question49:-\_\_\_\_\_ are used where electronic character recognition is required for sorting and calculating as in bank cheques and business.

A:-Water color inks

B:-Magnetic inks

C:-U.V. inks

D:-Both 1 and 3

Correct Answer:- Option-B

Question50:-All inks that contain drying oils or drying oil modified resins depend on

A:-Oxidation and polymerization

B:-Absorption

C:-Evaporation

D:-None of the above

Correct Answer:- Option-A

Question51:-The \_\_\_\_\_ gives the ink fluidity, so that it can be distributed evenly by inking rollers and properly applied as a smooth film.

A:-Pigment

B:-Vehicle

C:-Dyes

D:-Additives

Correct Answer:- Option-B

Question52:-The dampening solution consists of \_\_\_\_\_ and a small amount of \_\_\_\_\_.

A:-Water and acid

B:-Water and oil

C:-Oil and acid

D:-None of the above

Correct Answer:- Option-A

Question53:-Most blanket washes are based on \_\_\_\_\_

A:-Hydrocarbons

B:-Aromatic hydrocarbons

C:-Aliphatic hydrocarbons

D:-None of the above

Correct Answer:- Option-C

Question54:-The desensitizer serves to remove the emulsion from the \_\_\_\_\_ of the plate.

A:-Image areas

B:-Non-image areas

C:-Both 1 and 2

D:-None of the above

Correct Answer:- Option-B

Question55:-\_\_\_\_\_balancing is a must for large diameter rollers run at very high speeds.

A:-Static

B:-Kinetic

C:-Dynamic

D:-Both 2 and 3

Correct Answer:- Option-C

Question56:-The structural design of a roller must be such that the roller does not \_\_\_\_\_unduly in response to the loads to which it is subjected in use.

A:-Bend

B:-Break

C:-Cut

D:-Both 2 and 3

Correct Answer:- Option-A

Question57:-The surface of a Blanket must be \_\_\_\_\_receptive in order to transfer the inked image.

A:-Water

B:-Ink

C:-Chemical

D:-None of the above

Correct Answer:- Option-B

Question58:-Electrical and electronic devices are widely used for \_\_\_\_\_systems.

A:-Tripping

B:-Tapping

C:-Electronic

D:-All of the above

Correct Answer:- Option-A

Question59:-The release of pressure is also reducing the risk of damage to printing \_\_\_\_\_and \_\_\_\_\_.

A:-Blanket and Impression roller

B:-Plate and Blanket

C:-Plate and impression roller

D:-Both 1 and 3

Correct Answer:-**Question Cancelled**

Question60:-Sheetfed offset presses, with most other types use the \_\_\_\_\_register system.

A:-One-point

B:-Two-point

C:-Three-point

D:-Four point

Correct Answer:- Option-C

Question61:-\_\_\_\_\_ electrically charged devices that repel the charged ink back to the ink rollers.

A:-Ink oscillator

B:-Ink mist suppressor

C:-Pattern Perforator

D:-Flying Paster

Correct Answer:- Option-B

Question62:-Match the columns

i. Perfecting Blanket to Blanket

ii. Inline

iii. Stack

iv. Common Impression Cylinder

a. Printing Business forms

b. Large diameter impression cylinder

c. No impression cylinder

d. Vertical blanket to blanket

A:-i-a, ii-c, iii-b, iv-d

B:-i-c, ii-a, iii-b, iv-d

C:-i-c, ii-a, iii-d, iv-b

D:-i-a, ii-c, iii-d, iv-b

Correct Answer:- Option-C

Question63:-\_\_\_\_\_ folder fold the web along its length using a triangular board.

A:-Former folder

B:-Jaw folder

C:-Chopper folder

D:-Primer folder

Correct Answer:- Option-A

Question64:-In \_\_\_\_\_ system, anilox roller turns directly in the ink fountain in a flexographic press.

A:-Single Roller System

B:-Two Roller System

C:-Three Roller System

D:-Chambered Doctor Blade System

Correct Answer:- Option-B

Question65:-Which of the following is not true about flexographic process?

A:-Can print on the reverse side on transparent films

B:-Photopolymer image carrier can be used for printing millions of impressions

C:-Prints on variety of absorbent and non-absorbent substrates

D:-Cannot print continuous patterns

Correct Answer:- Option-D

Question66:-In which stage of sheet photopolymer platemaking process, curing of whole plate happens?

A:-Back exposure

B:-Face exposure

C:-Post exposure

D:-Developing

Correct Answer:- Option-C

Question67:-\_\_\_\_\_ is a more suitable metal base for laser engraving.

A:-Zinc

B:-Aluminium

C:-Copper

D:-Steel

Correct Answer:-**Question Cancelled**

Question68:-The process used to improve the ink transfer to the substrate in gravure process by creating an electric field in the area of the nip to assist the capillary action of the gravure process

A:-Electromagnetic Assist

B:-Electromechanical Assist

C:-Electrochemical Assist

D:-Electrostatic Assist

Correct Answer:- Option-D

Question69:-\_\_\_\_\_ substrate are used for publication work in gravure press.

A:-Films

B:-Corrugated Board

C:-Cellophane

D:-Coated Paper

Correct Answer:- Option-D

Question70:-The image carrier of screen printing process has the following characteristics

A:-Image areas are in relief

B:-Image areas are recessed

C:-Image areas are open

D:-Image areas are in same plane with non-image areas

Correct Answer:- Option-C

Question71:-Which of the following is true about screen printing process?

A:-High resolution data can be reproduced

B:-Complex production process

C:-Ink viscosity is very low

D:-Screen printing can be done on irregular shaped objects

Correct Answer:- Option-D

Question72:-\_\_\_\_\_ fabric for screen mesh gives better quality, uniformity and dimension stability.

A:-Silk

B:-Nylon

C:-LDPE

D:-HDPE

Correct Answer:- Option-B

Question73:-Wood free paper is created from

A:-Soy pulp

B:-Lignin pulp

C:-Chemical pulp

D:-Mechanical pulp

Correct Answer:- Option-C

Question74:-\_\_\_\_\_ process uses photoconductive material coated drum to create the latent images.

A:-Electrophotographic

B:-Magnetographic

C:-Inkjet

D:-Thermal

Correct Answer:- Option-A

Question75:-Which of the following is true about non-impact printing?

A:-Fixed image carrier

B:-Can print variable data

C:-Requires high pressure for ink transfer

D:-Economical when run length is more than a million

Correct Answer:- Option-B

Question76:-If the upper knife is working against the lower knife, what kind of cutting principles is this?

A:-Knife Cut Principle

B:-Shear cut principle

C:-Burst cut principle

D:-Three cut principle

Correct Answer:- Option-B

Question77:-The process of attaching (using adhesive) a folded loose leaf into the core sheet is called as

A:-Tipping in

B:-Inserting

C:-Sticking

D:-Backing

Correct Answer:- Option-A

Question78:-Lifting of the coating from coated stocks onto plate and blankets is called

A:-Picking

B:-Pilling

C:-Linting

D:-Dusting

Correct Answer:- Option-A

Question79:-Ink pigment does not bind into the paper stock is called as

A:-Mottle

B:-Chalking

C:-Ghosting

D:-Hickeys

Correct Answer:- Option-B

Question80:-Which maintenance is carried out in the predetermined intervals?

A:-Schedules Maintenance

B:-Predictive maintenance

C:-Preventive Maintenance

D:-Restoration Maintenance

Correct Answer:- Option-C

Question81:-Arrange items in a proper way to increase the process efficiency is called

A:-Seiri

B:-Seiso

C:-Seiketsu

D:-Seiton

Correct Answer:- Option-D

Question82:-In the printing industry, machines are leveled by using which

instrument?

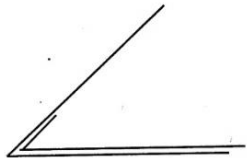
A:-CRANES

B:-DIAL INDICATOR

C:-SPIRIT LEVEL

D:-MICROMETER

Correct Answer:- Option-C



Question83:- Guess the type of end paper?

A:-Single end paper

B:-Cloth joint end paper

C:-Zig zag end paper

D:-Reinforced end paper

Correct Answer:- Option-D

Question84:-What is another name for the page numbers in the book?

A:-Caption

B:-Margin

C:-Folio

D:-Master page

Correct Answer:- Option-C

Question85:-1 Quire = \_\_\_\_\_ sheets.

A:-25

B:-24

C:-100

D:-500

Correct Answer:- **Question Cancelled**

Question86:-In which type of binding, adhesive only is used as a Securing material?

A:-Spiral Binding

B:-Comb Binding

C:-Perfect Binding

D:-Leaf binding

Correct Answer:- Option-C

Question87:-What is the term that refers to the adhesive binding of book blocks into the cover?

A:-Smashing

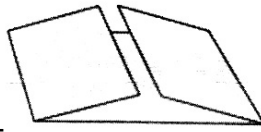


B:-Inserting

C:-Forming a hinge fold

D:-Casing-in

Correct Answer:- Option-D



Question88:- Guess the types of fold.

A:-Letter fold

B:-Gate Fold

C:-Concertina fold

D:-Z fold

Correct Answer:- Option-B



Question89:- This symbol represents which process?

A:-Forwarding

B:-Gathering

C:-Coloring

D:-Folding

Correct Answer:- Option-D

Question90:-Which is not a securing material?

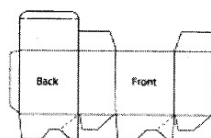
A:-Paper

B:-Thread

C:-Wire

D:-Metal

Correct Answer:- Option-A



Question91:- Find out the type of carton.

A:-Glue-end cartons

B:-Lock-end cartons

C:-Auto lock-bottom cartons

D:-Tuck-in-flap cartons

Correct Answer:- Option-C

Question92:-What is the recycle code for HDPE?

A:-1

B:-2

C:-3

D:-4

Correct Answer:- Option-B

Question93:-Which Cap type offers the security against breakage of the product?

A:-Press-turn caps

B:-Squeeze turn caps

C:-Hidden tab caps

D:-Tamper evident caps

Correct Answer:- Option-D

Question94:-Which liquid is sprayed on the food products in the Cryogenic freezing?

A:-Nitrogen

B:-Ammonia

C:-Water

D:-Magnesium

Correct Answer:- Option-A

Question95:-Which is not a MAP gas?

A:-Nitrogen

B:-Oxygen

C:-Carbon dioxide

D:-Ozone

Correct Answer:- Option-D

Question96:-What type of wave form is available at pin no. 2 of function generator IC 8038?

A:-Sine wave

B:-Square wave

C:-Triangular wave

D:-Modulated wave

Correct Answer:- Option-A

Question97:-The pressure and volume of a gas are inversely proportional to each other as long as the temperature and the quantity of gas are kept constant. The law is

A:-Avogadro's law

B:-Gay Lussac's law

C:-Boyle's law

D:-Charles law

Correct Answer:- Option-C

Question98:-The quantity of carbon in medium carbon steel is

A:-0.15% to 0.25%

B:-0.25% to 0.50%

C:-0.50% to 1.50%

D:-2.0% to 4.0%

Correct Answer:- Option-B

Question99:-The trimmed size of A2 drawing sheet is

A:-841 mm × 1189 mm

B:-594 mm × 841 mm

C:-420 mm × 594 mm

D:-297 mm × 420 mm

Correct Answer:- Option-C

Question100:-A line of 50 mm length which is parallel to both HP and VP is lying on the HP, the front view will be

A:-on the VP

B:-on the reference line

C:-on the HP

D:-on both HP and VP

Correct Answer:- Option-B